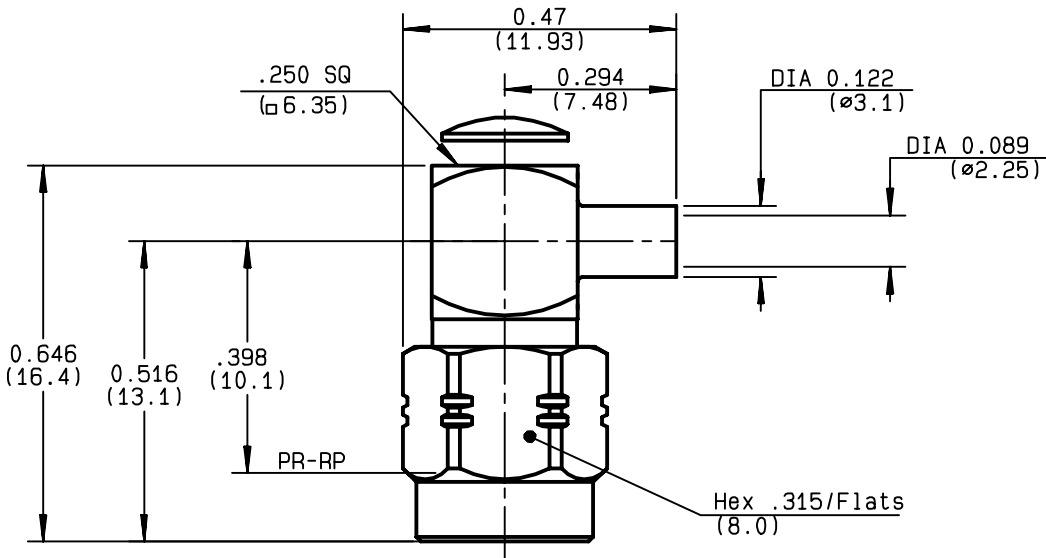


**RIGHT ANGLE PLUG SOLDER TYPE  
CABLE .085**

**R124.153.001**  
**SERIES SMA-COM**



NOMINAL IMPEDANCE	<b>50</b> Ω
FREQUENCY RANGE	<b>0-12.4</b> GHz
TEMPERATURE RATING	<b>-65/+105</b> °C
V.S.W.R	<b>1.10</b> + <b>.01</b> x F(GHz)Maxi
RF INSERTION LOSS	<b>0.05</b> √F(GHz) dB Maxi
VOLTAGE RATING	<b>335</b> Veff Maxi
DIELECTRIC WITHSTANDING VOLTAGE	<b>750</b> Veff Mini
INSULATION RESISTANCE	<b>5000</b> MΩMini
HERMETIC SEAL	<b>NA</b> Atm.cm <sup>3</sup> /s
LEAKAGE (pressurized only)	<b>NA</b>
MECHANICAL DURABILITY	<b>100</b> Cycles
WEIGHT	<b>4.05</b> gr
SPECIFICATION	

CABLES : <b>KS 1</b> <b>RG 405</b>	
OTHERS CHARACTERISTICS	
CABLE RETENTION	<b>130</b> N Mini
CENTER CONTACT RETENTION	
Axial force - mating end	<b>27</b> N Mini
Axial force - opposite end	<b>27</b> N Mini
Torque	<b>NA</b> cm.N Mini
RECOMMENDED TORQUES	
Mating	<b>60</b> cm.N
Panel nut	<b>NA</b> cm.N
Clamp nut	<b>NA</b> cm.N

CONNECTOR PARTS	MATERIALS	FINISH	(all values are given ) in micrometers
BODY	BRASS	BBR 2	
OUTER CONTACT			
CENTER CONTACT	BRASS	GOLD 1.3 OVER COPPER 2.5	
INSULATOR	PTFE	-	
GASKET	SILICONE RUBBER	-	
OTHERS PIECES	BRASS	BBR 2	

ISSUE	CREATION DATE	FILE PART-NUMBER
<b>9847A00</b>	<b>18/07/1996</b>	<b>96-1200-074</b>



*Connect to the future*

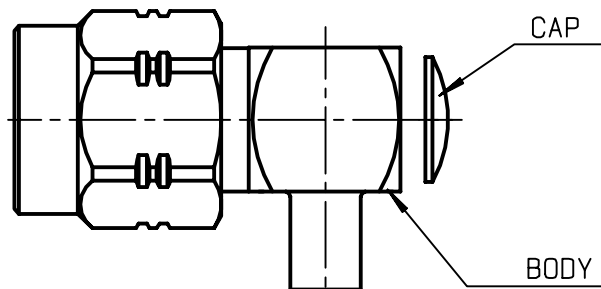
The information given here is subject to change without notice.  
Design changes may be in order to improve the product .

TRIQUES



**R124.153.001**

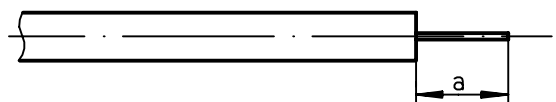
ISSUE **9847A00** SERIES **SMA-COM**



We recommend a cable thermal preconditionning before assembly.

①

Strip the cable .  
Stripping tool R 282.051.000  
Positioner R 282.063.000



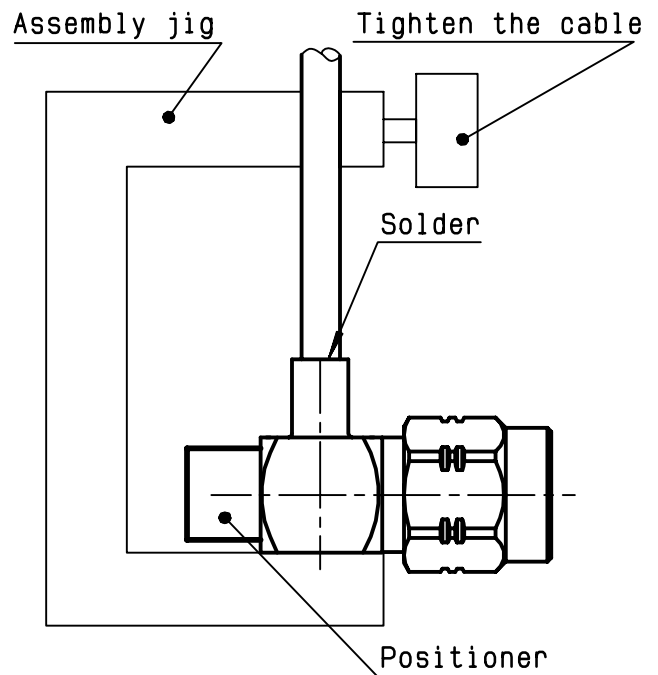
Stripping	a	b	c	d	e
inch	0.125 0	0	0	0	0
mm	3.17				

②

2-1 Introduce the cable into the connector body until it stops. Place the sub assembly into the assembly jig R 282.740.000 (or equivalent) with positioner R 282.744.201 and tighten it.

2-2 Solder the body onto the cable.

2-3 Let the assembly cool down before removing it from the jig .



③

3-1 Solder inner conductor.  
3-2 Put the cap in its place.  
3-3 Press cap flush or slightly below surface of body assembly.

